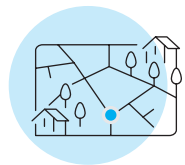




Field boundaries

The scheme will involve new planting, field boundary enhancement and planting of seed mixes within the solar PV areas. A *Biodiversity and Landscape Management Plan* will be submitted as part of application for development consent.



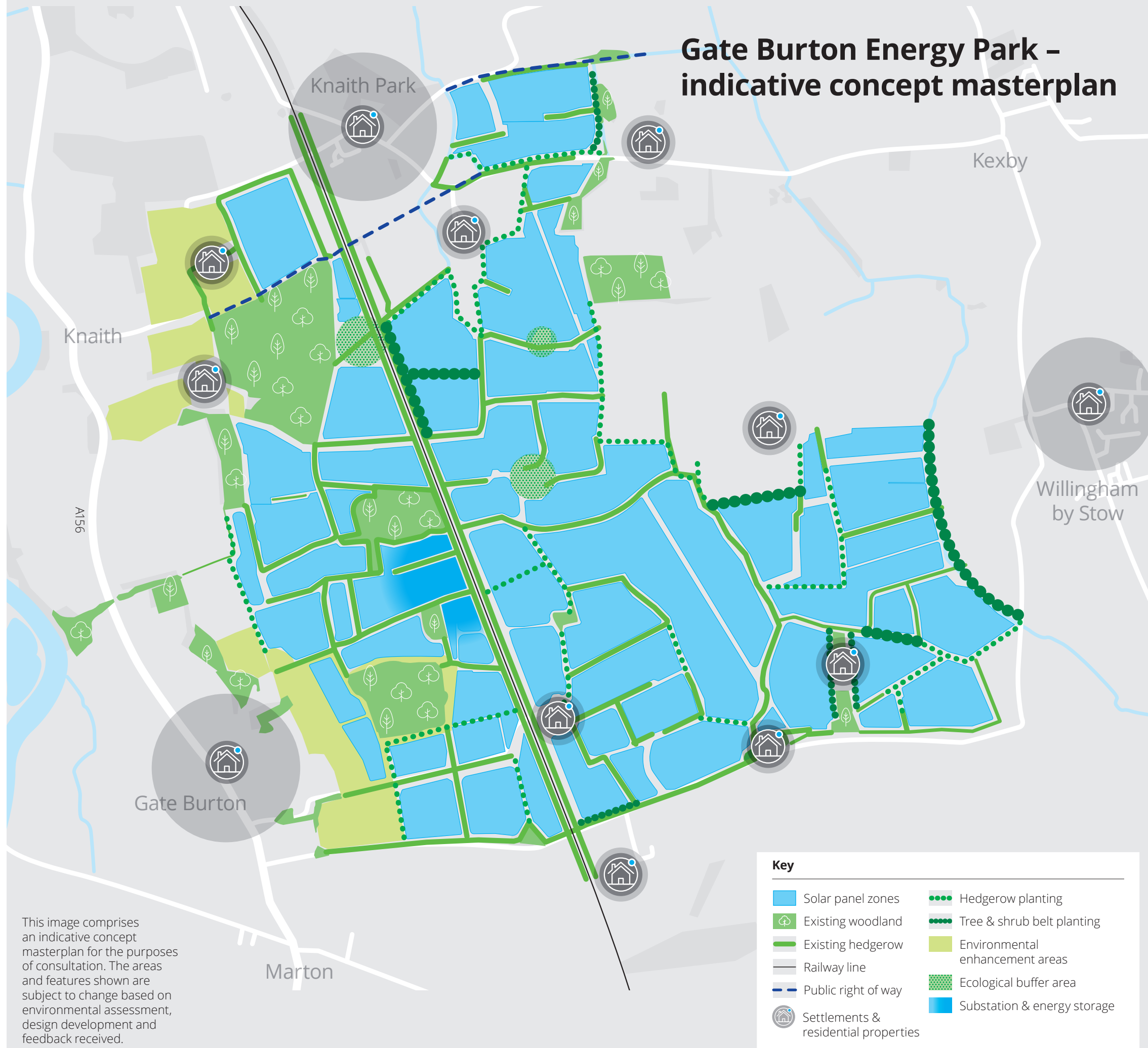
Scheme layout

Siting of infrastructure will avoid below ground archaeological features wherever possible. Screening and planting will be designed to minimise impact on the setting of heritage assets. There will be no disturbance to Burton Ancient and Semi-Natural Woodland.

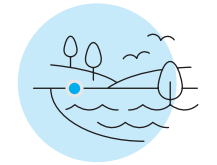


Screening & planting design

Screening and planting design will be developed to reduce visual impact by providing environmental enhancement areas, off-sets and buffer zones.



Gate Burton Energy Park – indicative concept masterplan



Water & drainage

The site is almost entirely located within Flood Zone 1, defined as having a low risk of flooding. A drainage strategy will be submitted with the application that will describe how surface water will be managed to prevent any increase in flood risk.



Heritage & biodiversity

A heritage setting buffer will be established to the east of Gate Burton. Measurable improvements for biodiversity will be defined and achieved through establishing ecological buffer areas, the creation of new habitats or enhancement and management of existing habitats.

This image comprises an indicative concept masterplan for the purposes of consultation. The areas and features shown are subject to change based on environmental assessment, design development and feedback received.

Key	
	Solar panel zones
	Existing woodland
	Existing hedgerow
	Railway line
	Public right of way
	Settlements & residential properties
	Hedgerow planting
	Tree & shrub belt planting
	Environmental enhancement areas
	Ecological buffer area
	Substation & energy storage